



4029

NK9D33

4029

MM7L46

4019

PRODUCTS

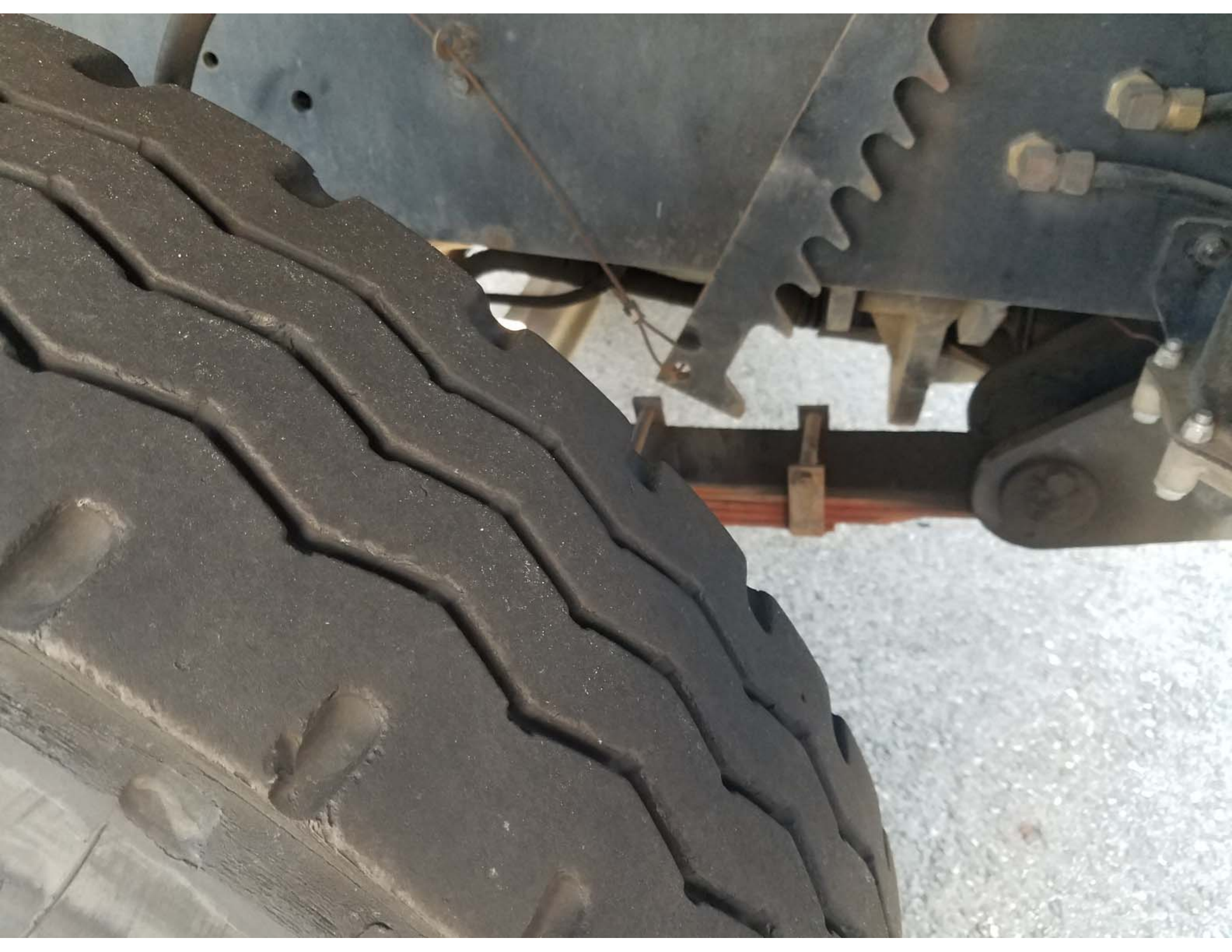


4029

029

402







WARNING



Locked Un-Locked

Call pump lever must be held in the open position for at least 2 seconds after the cab is completely down




CAUTION
Failure to disconnect battery terminals before repair or service could result in damage to engine, transmission, or ABS systems.



20

4050

4029

VISTA CAB

4053

X



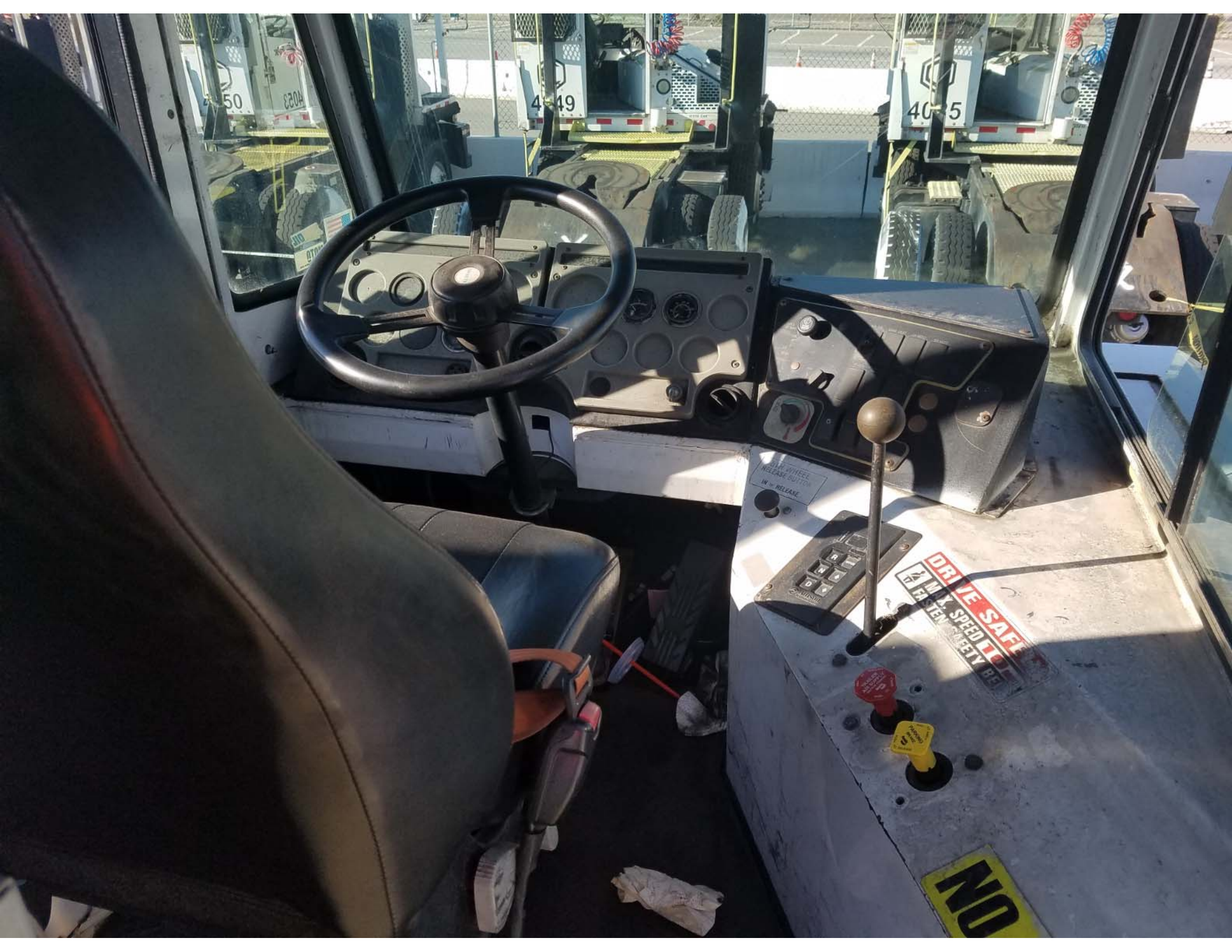
402

7/46
19

Clipboard with multiple sheets of paper, likely a checklist or inspection form.



USE ULTRA LOW-SULFUR
DIESEL FUEL ONLY



50

4204

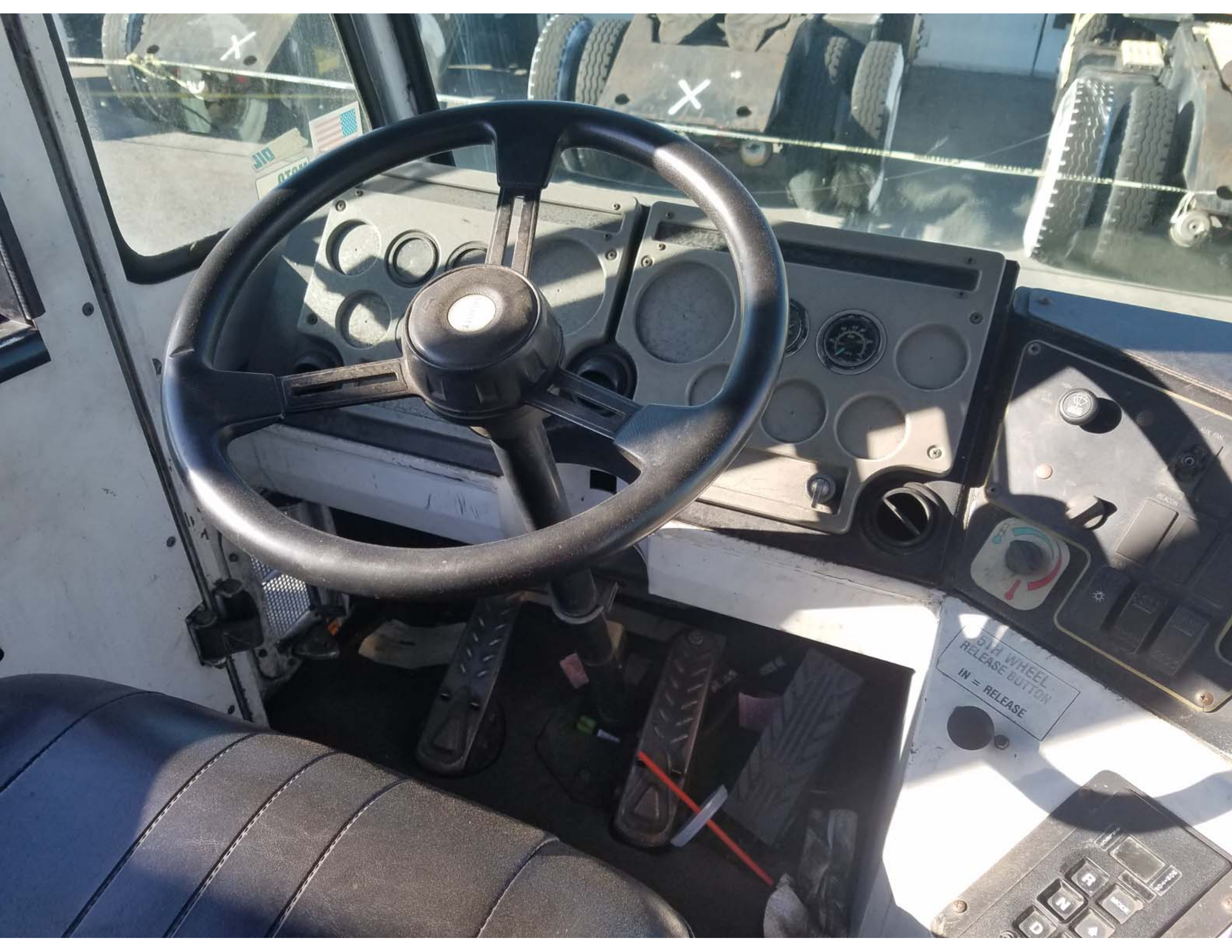
4-49

40-5

WHEEL RELEASE BUTTON
IN RELEASE

DRIVE SAFELY
ALWAYS WEAR YOUR SEATBELT

NO



J10
0700

5th WHEEL
RELEASE BUTTON
IN = RELEASE

D N R
M E
A



MOTO
USA

5TH WHEEL
RELEASE BUTTON
IN = RELEASE

